



New generation MUSICA offers
a unique visibility and contrast

Accuracy is the heart of radiology

Case study, Hôpital Claude Galien, Quincy-Sous-Sénart
France

AGFA 
HealthCare

Interview

INTERVIEWEE: DR. YVES COHEN

Radiologist at private hospital 'hôpital Claude Galien', Quincy-sous-Sénart, France

The latest generation of MUSICA image processing software has taken a new step forward in the presentation of the details necessary for very high quality diagnostic information, especially for mammography. Dr. Yves Cohen, radiologist at the hôpital Claude Galien, in France, collaborated with Agfa HealthCare in the development of the software in this discipline.



The private 'hôpital Claude Galien', in Quincy-sous-Sénart, France serves an area with a population of around 150,000. Part of the Paris Sud region of the Ramsay Générale de Santé group, it was established in 1995 following the merger of several healthcare facilities. The 260-bed hospital is today a state-of-the-art facility, with 90 practitioners covering a broad range of care services: general and orthopedic surgery, complete and coordinated cancer treatment, cardiology (including an angio-coronarography service and cardiology intensive care unit (ICU)), a maternity department (including a neonatal unit), an emergency service, hemodialysis and a nutrition-obesity service.

Within the hospital, the radiology department handles around 100 patients each day for radiography and ultrasound services. The 17 technicians strive to keep the workflow smooth, along with the nine radiologists who also work in two other radiology centers in the city. "With the hospital's specialty in cancer care, we are especially called upon for biopsy interventions," explains Dr. Yves Cohen, radiologist at the hospital.

"It's rare for one of our vendors to ask our advice before developing their products. Agfa HealthCare's customer-centered approach for MUSICA is very positive for us because we become actors in the equipment offered."

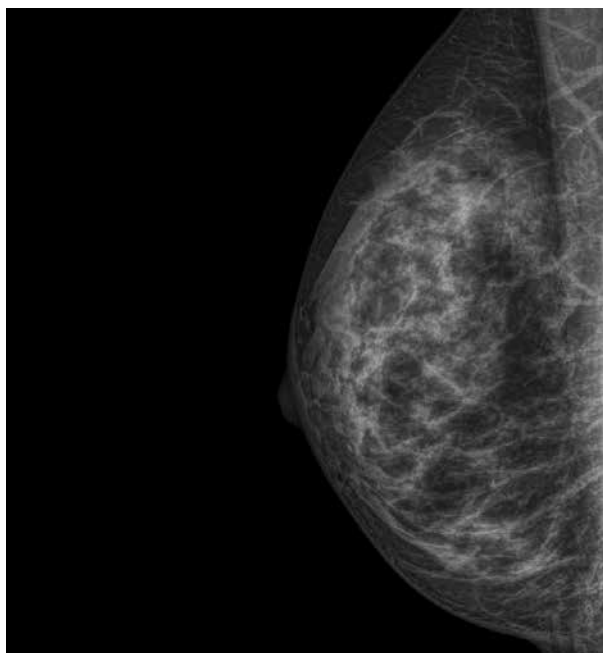
– Dr. Yves Cohen, radiologist at private hospital 'hôpital Claude Galien', Quincy-sous-Sénart, France

INSTANT DR: BENEFITS ACROSS THE BOARD

The collaboration between the radiology department of the hôpital Claude Galien and Agfa HealthCare goes back a long time. "We have worked with Agfa HealthCare for more than 10 years. While visiting other facilities, we discovered their reliability and ease of use: two key criteria for our own activities. That's what led us at that time to change vendor by switching to Agfa HealthCare," explains Dr. Cohen. The hospital was already using digital radiography, and in less than a year decided to implement the Instant DR direct radiography (DR) digital detector. "This solution offers us many advantages: less cassette handling plus ease of use, integration with our existing devices – as our X-ray tables are in good condition and we don't wish to change them – continuity of service



"During the on-site trial of the Instant DR, Agfa HealthCare was able to immediately carry out a demo without any modification to our room!"



(Instant DR includes two additional batteries) and, of course, its potential for dose reduction." Dr. Cohen recalls: "During the on-site trial of the Instant DR, Agfa HealthCare was able to immediately carry out a demo without any modification to our room!"

In the course of this long-term relationship with Agfa HealthCare, Dr. Cohen has had the opportunity to work with all the versions of MUSICA, from version 1 through to the version 3 now being used with the Instant DR. "The earlier versions required a rather longer set-up. Today, with version 3, everything is ready from the start. There isn't much you have to do!" Dr. Cohen continues, "To give a comparison, we have spent a day and a half trying to configure other equipment. With MUSICA, the images already offer very good diagnostic quality, saving time not only for the team, but for the patient as well."

WITH MUSICA, "EVERYTHING IS READY FROM THE START"

To further its goal of offering customers leading edge solutions that correspond to their needs and those of their patients, Agfa HealthCare proposed to Dr. Cohen to take part in the development of MUSICA mammography. "Within our activity we receive images from other radiology centers, so we have significant experience in handling results from different systems. Agfa HealthCare wanted our advice to continue the evolution of MUSICA for mammography, to enhance detectability and image rendering." A collaborative work was thus carried out over six months, between an Agfa HealthCare product engineer, Dr. Cohen, and another radiologist from hôpital Claude Galien. "Agfa HealthCare used our functional field expertise to the technical development of the mammography software. It's rare for one of our vendors to ask our advice before developing their products, but this is what made us want to work with Agfa HealthCare on MUSICA. Such a customer-centered approach is very positive for our department and our patients because we become actors in the equipment offered, for an excellent image that is the heart of our activity."

The joint work resulted in enhancements to the MUSICA software, especially in terms of optimized visibility of soft tissues and improved contrast in images of dense breasts, which make detection of pathological lesions complex. "The image is hidden within the breast; the lesions can be masked. The software automatically adapts the image parameters in order to better highlight the images," explains Dr. Cohen, who was able to validate the developments for the latest version of MUSICA mammography.



MUSICA OPTIMIZES QUALITY AND CONTRIBUTES TO DOSE REDUCTION

Like all radiology services, the department at the hôpital Claude Galien is concerned about radiation dose management.” Of course we are subject to regulations and very strict controls regarding dose management, but we are definitely heading towards as much reduction as is possible, for precautionary reasons,” adds Dr. Cohen. “The Instant DR and MUSICA contribute to this in several ways. During the setup, parametrization enables the optimization of the image quality/radiation balance. The solution also offers high tolerance for settings and consistently provides high quality images. This is particularly advantageous for less experienced technicians. And finally, having immediate access to usable images means the patient doesn’t have to undergo additional images, thereby reducing exposure to radiation, plus we save time.” Dr. Cohen highlights his opinion on MUSICA’s ease of use compared to other solutions in the market; in his opinion: “fewer clicks, less time needed for layout and settings, fast image handling: it’s efficient.”

“With MUSICA, the images already offer very good diagnostic quality, saving time not only for the team, but for the patient as well.”

A LONG-TERM, VALUE ADDED RELATIONSHIP

“The current issues for a radiology department are relatively simple,” concludes Dr. Cohen. “Greater flexibility, thanks to ‘intelligent’ systems that offer automatic configuration and, in contrast with very complex systems that take too long to configure and are not viable, moving towards a simplicity of use that allows us to save time: this is what Agfa HealthCare is offering us. Going beyond a simple client-supplier relationship, we have created a real partnership over time, enabling us to evolve together towards the radiology of the future: efficiency, speed, smoothness and accuracy.”





Agfa HealthCare solutions

Instant DR

The DX-D 40 digital detector with Automatic Exposure Detection (AED) offers a fast and easy way for radiography facilities to benefit from high-quality digital imaging. Wireless and cable-free, it allows radiology facilities, regardless of size or budget, to cost-effectively upgrade computed radiography (CR) solutions to digital radiography (DR). The quick and easy installation and user-friendly interface provide, in an instant, all of the benefits of DR, without modifying the existing equipment.

MUSICA image processing software

MUSICA is an intelligent image processing solution providing consistently high image quality. It improves image production workflows, and enhances both departmental productivity and diagnostic confidence. The automatically optimized images offer a high level of detail, even for difficult zones, plus the potential for dose reduction.



Details as of PDF Creation Date

Document Metadata

Title:	France_HÃ´pital Claude Galien _Aug 2016
Livelink ID:	56136848
Version#:	2
Version Date:	2016-09-05 08:05 AM CET
Status:	Approved on 2016-09-09 11:46 AM CET
Owner:	Birgitte Baten (amddg)
Created By:	Birgitte Baten (amddg)
Created Date:	2016-08-18 09:54 AM CET
PDF Creation Date:	2016-09-09 11:46 AM CET

This document was approved by:

Signatures:

1. Benton Bailey (mitkq) on 2016-09-08 01:36 PM CET
2. Debbie Huff (moqyl) on 2016-09-08 09:37 PM CET

Detailed Approver History:

- **Approval Workflow started on 2016-09-05 08:06 AM CET**
 - Approval task originally assigned to ShaeAnn Cavanagh (aximv)
 - Approval task completed by Debbie Huff (moqyl) on 2016-09-08 09:37 PM CET (workflow proxy)
 - Approval task originally assigned to and completed by Benton Bailey (mitkq) on 2016-09-08 01:36 PM CET

Version & Status History

Version#	Date Created	Status
2	2016-09-05 08:05 AM CET	Approved - 2016-09-09
1	2016-08-18 09:54 AM CET	Reviewed - 2016-08-23