

# NEONATAL IMAGING PACKAGE



## Small patient need bigger care

The chest X-ray is the most frequently ordered radiological investigation in NICUs. In most cases, an anteroposterior view of the chest would provide sufficient diagnostic information. Lateral chest and abdomen views should be included only when there is a clinical indication.

Children are more sensitive to radiation and its cumulative effects. Yet, over the course of treatment premature infants can undergo as many as 30-40 examinations, and dose management is an important consideration. We design our dedicated paediatric and neonatal digital radiography solutions to deliver the optimum balance between low radiation dose and high image quality.



For more information log on to  
<https://medimg.agfa.com/int/india/>

Follow us on  
LinkedIn for latest updates



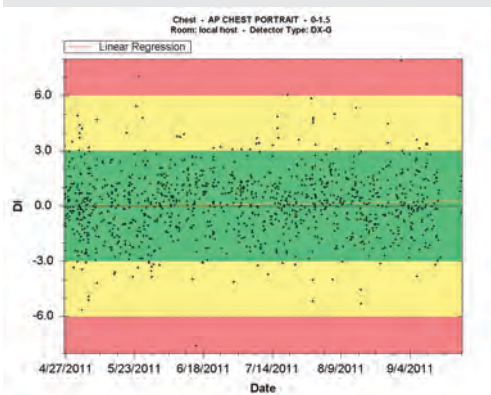
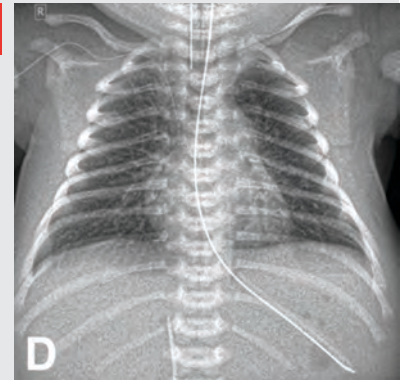


## NX Neonatal Image Processing:

- ◆ Consistent image quality, regardless of exposure factor even at low dose
- ◆ NX Neonatal processing helps you reduce dose up to 60% while still providing exquisite image quality and improved productivity resulting into consistent image quality, regardless of exposure factor
- ◆ Advanced image enhancement algorithms help to achieve diagnostically reliable images even more efficiently while limiting retakes (=less exposure to radiation)
- ◆ NX Neonatal processing facilitate smooth & quick workflow allowing you to do more within less time

## NX Catheter Processing:

- ◆ Increases the visibility of catheters and other low contrast, tube like structures in general radiology images
- ◆ NX Catheter processing creates a copy of the original image which is reprocessed, keeping the original image available for interpretation
- ◆ Single button push creates the catheter processed image



## NX Dose Monitoring:

- ◆ NX dose monitoring generates repeat reject, exposure index and diagnostic reference level reports and graphs
- ◆ NX dose monitoring provides statistical analysis of exposure & dose performance
- ◆ Exposure & deviation index is generated which helps to implement corrective actions, if needed
- ◆ Detailed exposure list for various indications can be created & exported for documentation purpose

## XD+ 10

- ◆ 10"x12" XD+ Detector for easy placement within the incubator
- ◆ Cesium (CsI) based detector provides 75% DQE value
- ◆ IPX 67 rating protects detector against dust & liquid
- ◆ Wireless detector technology eases the entire process of image acquisition
- ◆ Offline image acquisition facilitate use of detector within the aseptic rooms with no connections
- ◆ 125  $\mu$ m resolution detector can capture every single details which is necessary for efficient diagnosis

